



IMPLEMENTING HEALTH SAFETY AND ENVIRONMENTAL MANAGEMENT SYSTEM WITHIN THE DRILLING DIVISION OF SONATRACH

ROBERT GORDON UNIVERSITY ABERDEEN

Prepared by: KAMAL MEKIRI

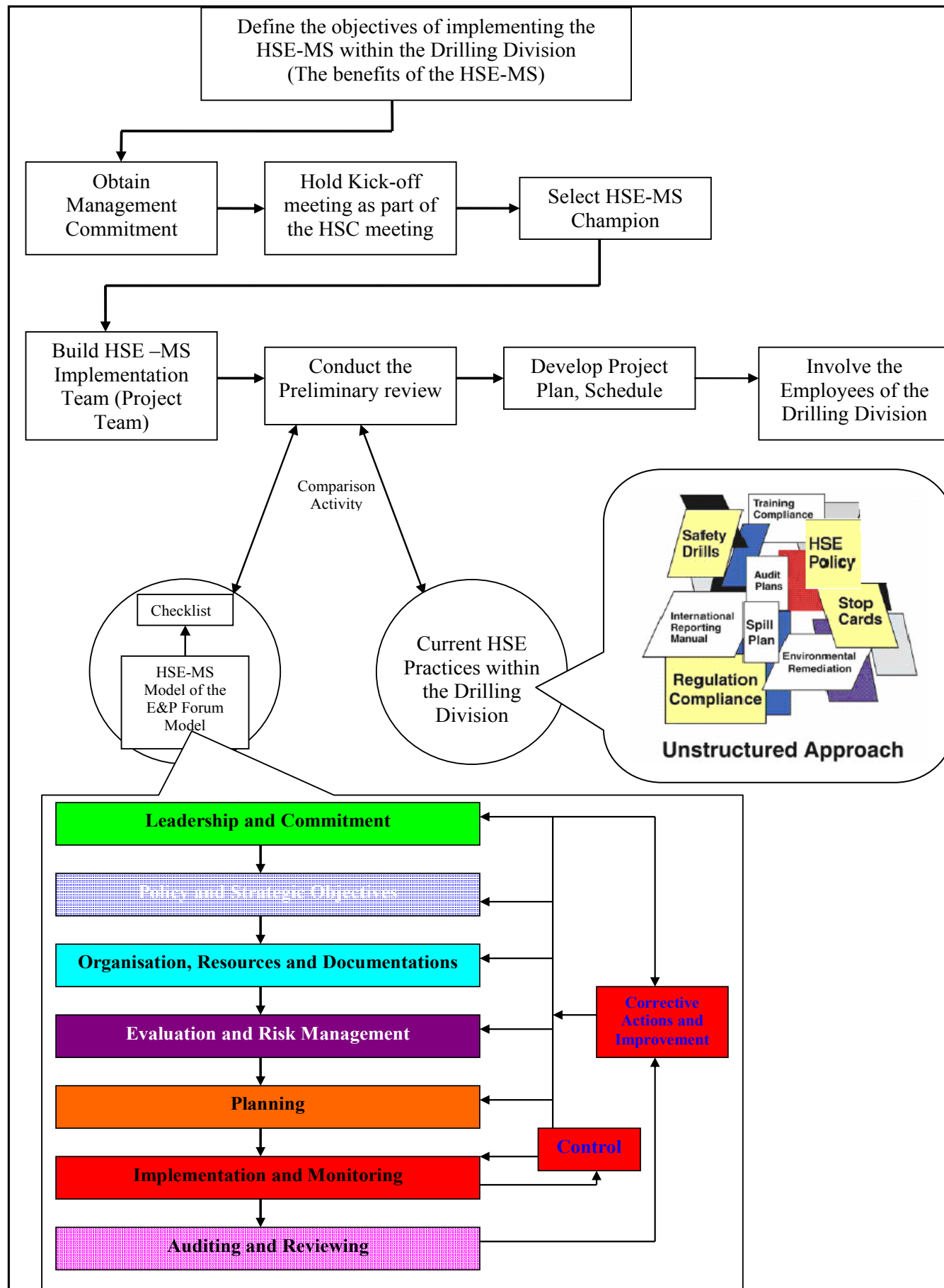
Supervised by: Dr. GORDON BOTTERILL

BACKGROUND TO THE STUDY

A Health Safety and Environment Management System (HSE-MS) describes the way an organisation is managed with respect to its stated objectives. HSE-MS provide continuity, identify improvement opportunities and can be used to demonstrate that controls supported by procedures and documentation are in place. Sonatrach has recognised the importance and the synergy that it will be gained through managing health, safety and environmental issues all together. It is currently studying how an HSE-MS can be implemented effectively within its different divisions. As long as the Drilling Division (DD) is one of Sonatrach upstream divisions, it has to apply Sonatrach HSE policy through the implementation of an efficient HSE-MS.

PROBLEM STATEMENT

The primary objective of this study is to show how to facilitate a successful implementation of an effective HSE-MS within the Drilling Division of Sonatrach. This study will provide answers to the following questions:
- What are the main steps which are necessary for the preparation of the groundwork to ensure a successful implementation of an HSE-MS within the Drilling Division of Sonatrach?
- How each element of the HSE-MS (E&P Forum model) can be implemented in the Drilling Division?
- How the DD can develop a plan and estimate the budget for the implementation of the HSE-MS?
- How to ensure a continuous improvement of the system through the use of a quantitative measurement method?



CONCLUSIONS

- Successful implementation of an HSE-MS requires careful planning beforehand.
- The analysis of the E&P forum model enables the DD to bridge the gaps identified in the preliminary review and fulfil the requirements of each element of the HSE-MS by identifying the resources needed and efficiently allocate responsibilities for accomplishing different tasks.
- The plan (schedule) and the estimated budget of the HSE-MS implementation include the budget and time needed to:
 - Obtain management commitment, select the champion and the HSE team, and involve employees.
 - Carry out the preliminary review
 - Correct the deficiencies identified in the gaps analysis.
- Measuring the effectiveness of the HSE-MS by using a quantitative method will help the DD to integrate the HSE performance into the drilling performance.

RECOMMENDATIONS

- How the management of contractors could be added as a key element to the HSE-MS of the DD
- How can the software DIMS (Drilling Information Management System which is used by the DD) help the DD in the implementation and development of the HSE-MS.
- How the DD uses its HSE-MS to obtain international certifications such as ISO 9000, ISO 14001 ... etc
- How to generalise the HSE-MS model of the DD to be used by all the other divisions of Sonatrach in order to get a common system of managing HSE.